

Update on Completed Environmental Fund Projects

- A-8 Anchorage
- Chula Vista Wildlife Reserve
 - Emory Cove
- Waterwise Landscaping

Debris Removal A-8 Anchorage



History of A-8 Anchorage

- 1980's Port allowed unlimited free anchoring.
- Up to 150 boats.
- Vessels were abandoned then sank with debris aboard.



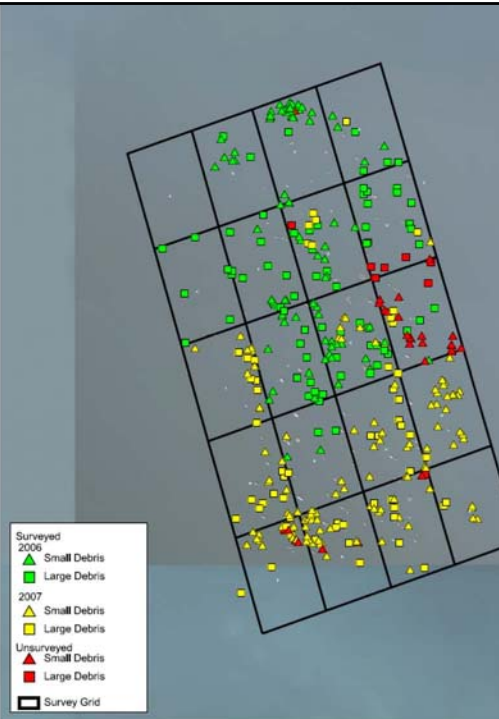
Pilot Study

- 1.8 tons of debris removed in December 2006.
- cost approximately \$35,000.



Phase 1 Debris Removal

- Side scan sonar found >350 items of debris.
- Divers targeted environmental debris for removal.



Phase 1 Debris Removal



- Over 2 tons of environmental debris removed.
- cost \$265,000.
 - assisted by \$42,000 grant from National Marine Fisheries Service – Marine Debris Removal Program.

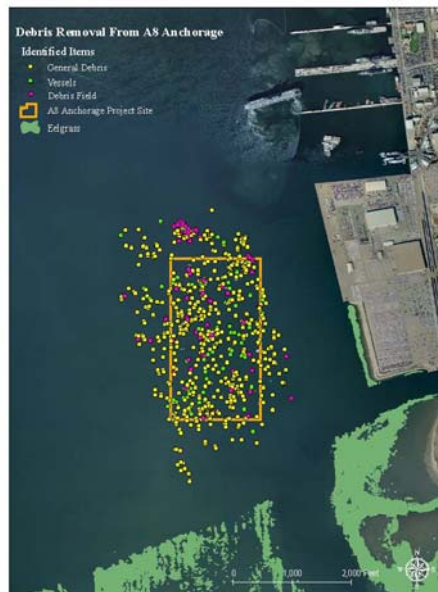
Phase 1 – December 2007

- Environmental debris removed:
 - 665 lbs of batteries,
 - 10 tanks,
 - 6 small motors - 4 outboards, generator, leaf blower,
 - Electronics and mixed debris.



Phase 2 – Debris Removal

- Anchorage Closed October 1, 2008.
- August 2009 side scan sonar survey identified over 675 items of debris including 78 boats and 64 debris fields.



Phase 2 – Debris Removal

- Debris removal started February 9, 2010.
- Cost \$335,000.
- Grant Funding:
 - \$200,000 – State Water Resources Control Board – Clean Up and Abatement Account.
 - \$100,000 – National Marine Fisheries Service – Marine Debris Removal Program.
 - \$35,000 – Port Environmental Fund and staff resources.



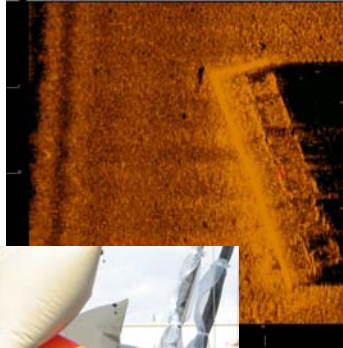
Phase 2 – Debris Removal

- 210 tons of debris removed.
- Plus, over 100 tons of scrap metal recycled.
- Total 310 tons



Phase 2 –Debris Removal

- Items removed:
 - 50 ton barge.
 - 25 ton barge.
 - 33 boats >6 meters.
 - 46 boats <6 meters.



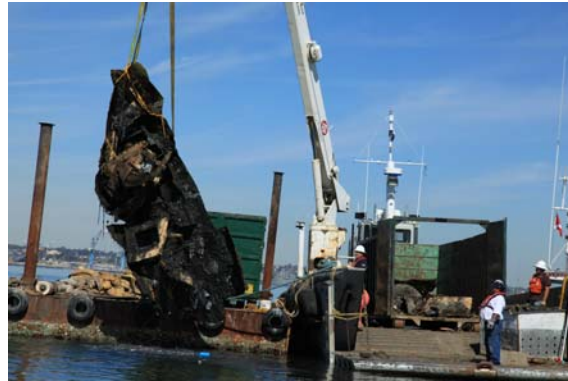
Phase 2 –Debris Removal

- Additional items removed:
 - Bathtub.
 - >13 engines.
 - >10 anchors with chains.
 - > 8 tanks.



Phase 2 –Debris Removal

- Additional items remaining:
 - 55 tires.
 - Small debris items, <3 meters.
- Port Tenants Association
 - Operation Clean Sweep.
 - Volunteer divers.



Restoration & Enhancement Chula Vista Wildlife Reserve

- Funding in association with
 - US EPA
 - USFWS
 - Port Environmental Fund
 - California Coastal Conservancy
 - NOAA – stimulus funding
- Volunteer Organizations
 - SD Audubon Society
 - SD Oceans Foundation
 - Ocean Discovery Institute
 - Coronado Rotary Club
- Restoration of 280 acres in South San Diego Bay
- 55 acres at CVWR
- 60,000 cy of material excavated to create tidal channel
- Dredged & pumped material to Pond 11



Chula Vista Wildlife Reserve



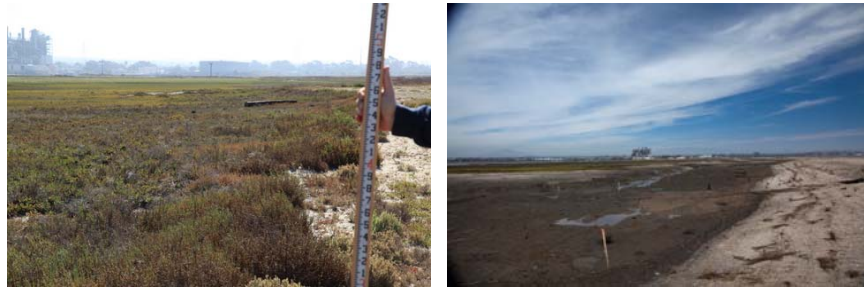
Chula Vista Wildlife Reserve



Looking West from the Southeast corner of East Basin PP-20



Looking East from the Southwest corner
of East Basin PP-19



Looking North from the Southwest corner
of East Basin PP-18



Looking North from the Southeast corner
of West Basin PP-14



Looking West from the Southeast corner
of West Basin PP-13



Pond 11

- An estimated 60,000 cubic yards of material
- Hydraulically dredged
- Created nesting beach



Emory Cove



Emory Cove



Waterwise Landscaping

- Replace turf with drought tolerant plants
- 11,000 square feet
- 5 locations around Harbor Island & Shelter Island



Questions

