



April 7, 2009

Eileen Maher
Environmental Services Department
Port of San Diego
3165 Pacific Highway
San Diego, CA 92191

Light-footed Clapper Rail Propagation & Sweetwater Marsh Nesting Enhancement Project Progress Report – Agreement #295693

Dear Eileen,

The Chula Vista Nature Center is please to provide you with this brief status report for the activities supported by the funds requested for Light-footed Clapper Rail captive propagation and artificial nest platform deployment.

2008 Breeding and Release Activities

The Nature Center housed two clapper rail pairs for educational exhibition and captive breeding. They produced multiple clutches of chicks, which resulted in 25 rails who were released into the wild. An additional 21 rails were produced at SeaWorld and San Diego Zoo's Wild Animal Park for release into the wild. All of the rails hatched at these locations went through a transition period, prior to release, at the Nature Center/Sweetwater Marsh. A total of 46 captive-bred clapper rails were released in 2008. Six rails were released into Sweetwater Marsh.

Artificial Nest Platforms

By January 2009, five artificial nest structures were deployed into Sweetwater Marsh. Three nests were deployed into the southern portion of the marsh (south of the Nature Center complex) to offer protection for a known wild rail pair who hatched chicks in 2007 and 2008. Two other platforms were deployed in the vicinities of other known rail pairs.

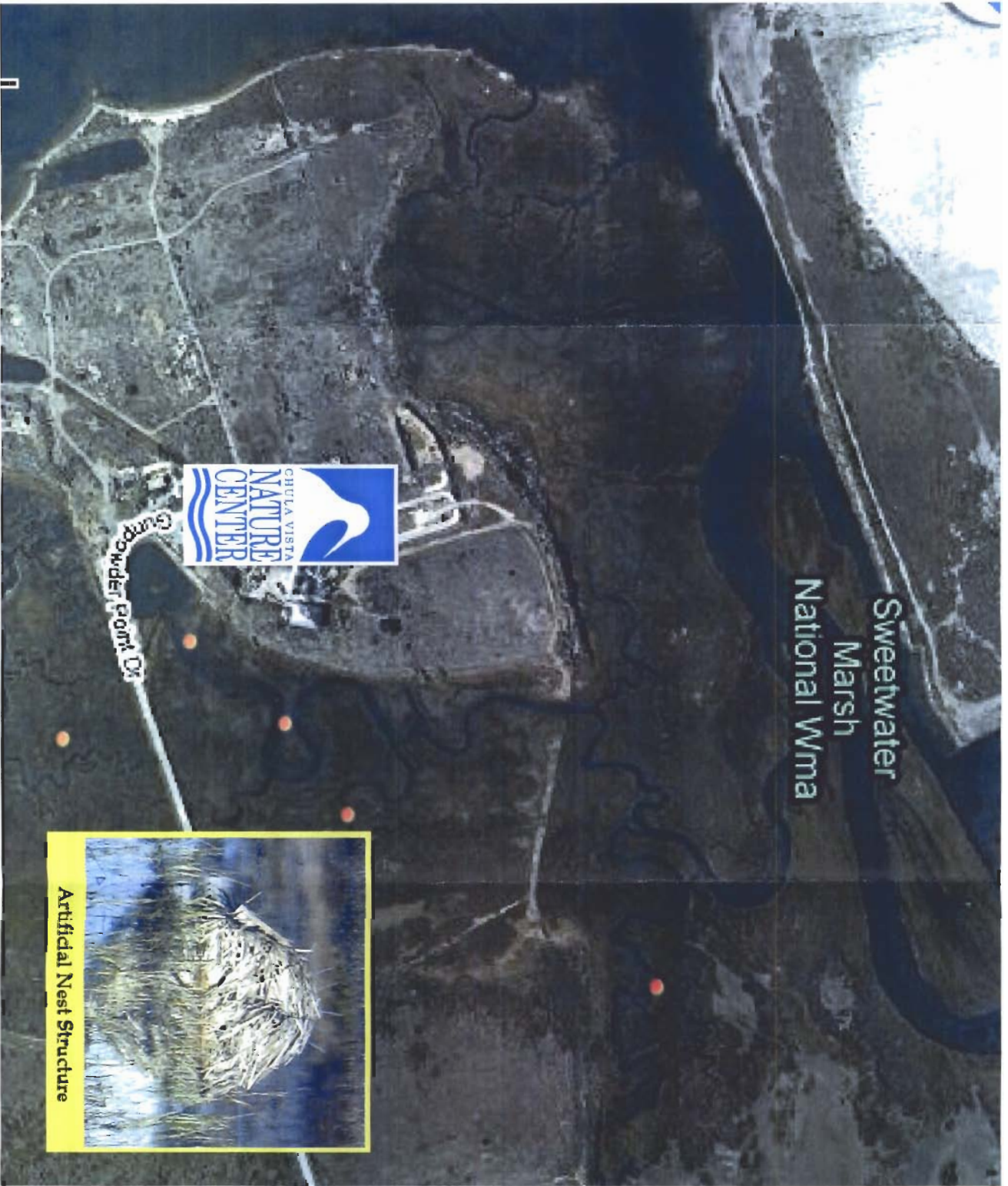
The nest structures are a new design that will offer increased protection from predators, primarily raptors. They are constructed and installed to float on the high tides and then return to their original position during low tides (see image in attached map)

Thank you for your continued assistance. We are already busy with clapper rail breeding this year – we currently have our first clutch of chicks and two additional egg clutches.

Regards,

Charles Gailband
Curator of Animals





Sweetwater
Marsh
National Wma



Artificial Nest Structure